

# Trek™ Triton MIL Series Electronic Cleaners

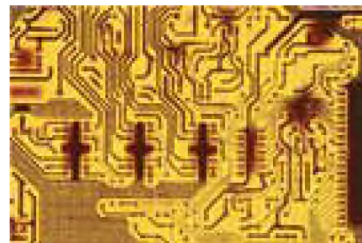


## *Inline Aqueous Electronics Assembly Cleaning System for Chemistry Applications*



### **Standard Features**

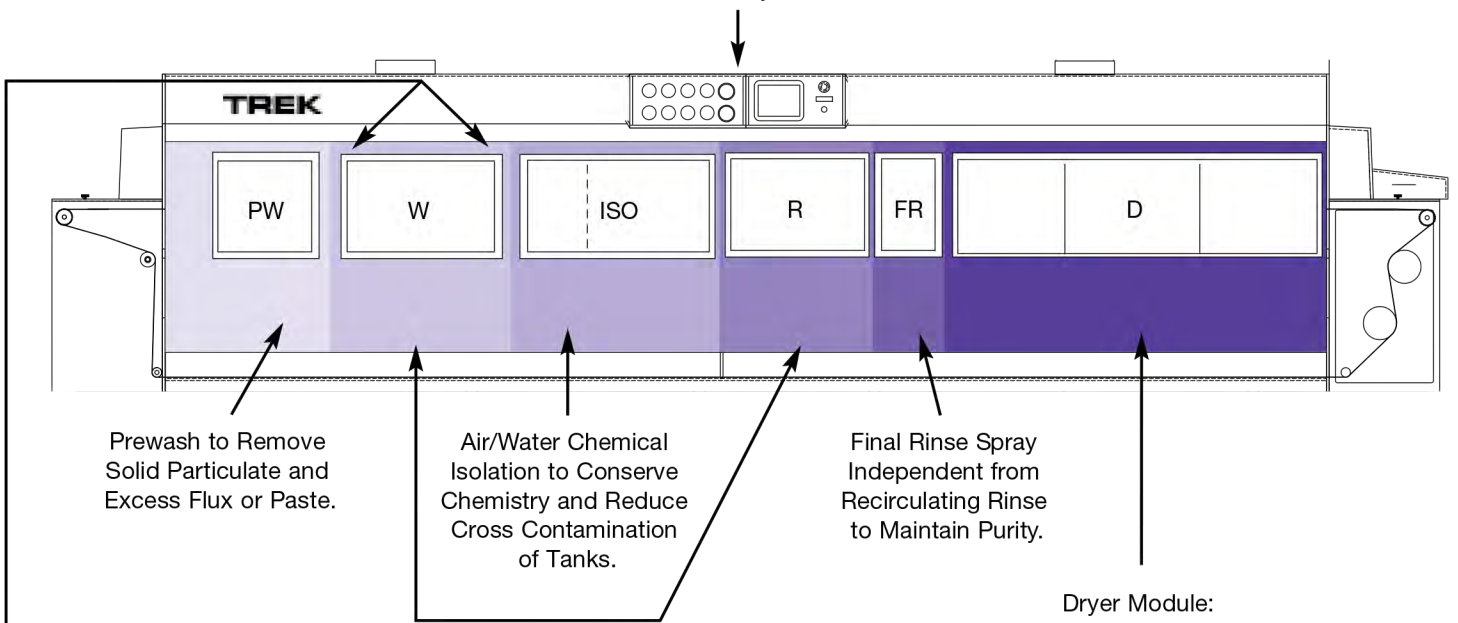
- Polypropylene Construction
- 14", 18", and 24" Belt Widths as Standard
- "Uni-Pass" Conveyor - Reduces Tank Contamination by Returning Conveyor Beneath Process Section
- Touch Screen Control Panel
- Redundant Over-Temp and Liquid Low Level Safety Protection
- Digital Temperature Control for Recirculating Tank Heat
- Slotted, Easy Draining Stainless Steel Conveyor Rail
- Removable Tank Screens
- Adjustable Spray Pressures
- Stainless Steel Recirculating Plumbing
- Chemical Isolation Section to Conserve Chemistry and Reduce Cross Contamination
- Optional Stainless Steel, High-Temp Dryer Module
- Utility Sink (Optional Stencil Sink)
- Full Tool-Less Access for Ease of Routine Maintenance
- Optional Water Treatment System for Closed Loop Rinse Operation (On-Board or Remote)
- Optional CE, UL Certification



**Trek™ Triton Mil is Ideally Suited for Electronic Assembly Cleaning.**



User Friendly Touch Screen Control Panel w/Allen Bradley PLC Standard.



Prewash to Remove Solid Particulate and Excess Flux or Paste.

Air/Water Chemical Isolation to Conserve Chemistry and Reduce Cross Contamination of Tanks.

Final Rinse Spray Independent from Recirculating Rinse to Maintain Purity.

Recirculating Wash and Recirculating Rinse: Stainless Steel Plumbing. Adjustable Spray Pressures.

Dryer Module: Top and Bottom Stainless Steel Air Knives Powered by High Pressure Centrifugal Blower(s). High Temp Stainless Steel Dryer Module Optional.



Typical Recirculating Spray Layout.



High Pressure/High Volume Stainless Steel Pumps in Wash and Rinse.



Typical Dryer Zone Air Knife Layout.



Centrifugal High Pressure Blower(s) in Dryer Section.

### Liquid Lock Option



TREK™ LIQUID LOCK drastically reduces consumption of cleaning solution and power. By sealing the wash zone with an entry and exit laminar flow of fluid, LIQUID LOCK traps the atomized spray in the wash chamber, essentially eliminating the number one cause of chemical solution loss: atomized spray mist exhaust. Extensive lab tests and customer data confirm that the TREK™ LIQUID LOCK option reduces consumption of cleaning solution by up to 75%.